



YOUR HEALTH. OUR COMMITMENT.

2005 CANCER COMMITTEE MEMBERSHIP

PHYSICIAN MEMBERS

Kenneth Miller, MD	Internal Medicine Chair, Cancer Committee
Rick Judge, MD	Pathologist
J. Martin Hayes, MD	General Surgeon
Gary Augter, DO	Dermatologist
Gregory Rogers, DO	Family Medicine
Michael Boyer, MD	Anesthesia/Pain Management
Melton James, MD	Diagnostic Radiologist
Lawrence Cibula, MD	Radiation Oncologist, Ex-Officio
Daniel Murphy, MD	Radiation Oncologist, Ex-Officio

NON-PHYSICIAN MEMBERS

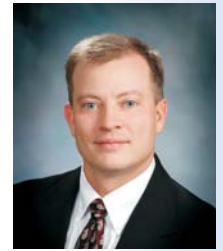
Donna M. Smith, CTR	Cancer Registrar
Ashley Lerblance, DPh	Pharmacist
Dorothy Crone, RN	Organ/Tissue Donation Coordinator
Buster Cockrum	Chaplain
Joy Cline, RN	Oncology Nurse Manager
Jerri Hooper, RDT	Dietary
Melannie Patton	Social Services
Janet Potter	Rehab Program Coordinator
Rhonda Kurvink	Hospice of McAlester Director
Kim Stout, RNC, BSN	Home Health Nursing Director
Jackie Gray	Reach to Recovery Coordinator
Caroline Echelle	American Cancer Society

YEAR IN REVIEW

The Cancer Registry Department experienced many transitions during 2005. Donna M. Smith took over as Cancer Registrar in July after the retirement of Geneva Miller, RN. Brandy Janes served as Cancer Registry Assistant until February 6th when Jackie Winningham took over as Assistant working until May 29th. It was decided to change the Registry's computer software program from Precis to Rocky Mountain Cancer Data Systems. This software was obtained free of charge from the Central Cancer Registry. The transfer of information to the new program was very easy and timely. This change in software allows the Registrar to transmit information straight to the Central Registry over a secure site allowing for more efficient and correct reporting. Several procedures were revised and put into action. This included Staging Forms; where they originate, how they are placed on the patient chart and how the Registrar receives them once signed by the physician. Also Cancer Conference changes were made concerning the notification of participants and the setup of the room and audio-visual equipment for these monthly meetings. Coordinating the Lee National Denim Day and Rally For A Cure® the Cancer Registrar raised almost \$1,500 in two days for the Susan G. Komen Breast Cancer Foundation. The Registrar also actively participated in McAlester Regional Health Center's Pink Ribbon Luncheon which benefits Tulsa Project Woman, Inc. Even with these changes the Cancer Registry Department continued to be strong in providing the monthly educational Cancer Conferences, as well as the other expected duties of abstracting new cases. The Registry currently includes 1752 active cases with 170 of those being newly diagnosed in 2005.

A WORD FROM THE CEO

Cancer is one of the leading causes of death among us. As such, McAlester Regional Health Center is committed to education, wellness and healthcare services that reduce the impact of this disease on the lives of others.



Our community should find peace of mind knowing we have a high quality Cancer Center and a commitment to an advanced cancer registry. It is our hope to further statewide efforts in identifying future needs to support those affected by this disease.

In 2005, the McAlester Regional Cancer Center served almost 300 patients in our region. Having cancer treatment services accessible in McAlester eases the burden on patients and family members who are dealing with the difficult circumstances of cancer treatment. We are very proud of our Cancer Center and Cancer Registry.

MRHC COMMUNITY INVOLVEMENT

Several Departments at MRHC are involved with activities that help raise awareness about certain cancers and provide funds for research and/or screenings and treatments.

Pink Ribbon Luncheon

The 7th Annual Pink Ribbon Luncheon brought out over 400 men and women to support this wonderful event. All proceeds from this event go to Tulsa Project Woman, Inc. to provide the education, screening and diagnostic breast care procedures to the women in Southeastern Oklahoma not covered by private health insurance and unable to afford breast health care. For information on how to attend or be a sponsor for this event please call Susan Williams, Public Relations Manager at 918-421-8687 or Brytnee Hammonds, Women's Imaging Manager at 918-421-6740.

Barrel Race Against Breast Cancer

In its second year this event had more than 230 participants with both riders and horses wearing pink from head to tail. Located at the Lightning C Arena (8 miles east of McAlester), this event is a fun day full of spirit and excitement. All proceeds from this event go to the Tulsa Project Woman, Inc. for lifesaving preventative breast health care. Please contact Dana Hogle, Marketing Associate at 918-421-8626 for participant or sponsorship information.

Lee National Denim Day

With millions of people coming together to wear denim and each donating \$5.00, Lee National Denim Day has become the nation's largest single-day fundraiser for breast cancer. Understanding the need for research and the importance of early detection, the Cancer Registry Department along with the employees of MRHC participated in this fundraising event for the first time in 2005 with almost 100 employees participating. With plans to continue our participation the employees hope to raise more money every year. For information about this event please contact Donna M. Smith, Cancer Registrar at 918-421-8658.

COMMUNITY BASED SERVICES

McAlester Regional Cancer Center

Since first opening its doors in March of 2000, McAlester Regional Cancer Center has provided state-of-the-art cancer treatment to hundreds of cancer patients each year and has earned a well-deserved reputation among cancer specialists throughout Oklahoma and surrounding states for its excellent care.

McAlester Regional Cancer Center is a cooperative venture of McAlester Regional Health Center and Cancer Care Associates (Oklahoma's largest association of oncology physicians). The center is staffed by Board-Certified Radiation Oncology and Medical Oncology Physicians who are well-known and widely respected specialists in cancer treatment. The nursing staff and radiation therapists who administer the chemotherapy and radiation treatments are specially trained and nationally certified. All aspects of supportive care - from cancer education and nutritional counseling to providing spiritual support resources - are considered important components of our commitment to caring for the "whole person" fighting cancer. Professional Care with a Personal Touch, Right Here at Home - that's McAlester Regional Cancer Center.



PATIENT EDUCATION

Look Good . . . Feel Better

Look Good...Feel Better is a free program teaching beauty techniques to women cancer patients helping to minimize the appearance-related side effects of their cancer treatment. Sponsored by the American Cancer Society, these two hour sessions are held quarterly with participants receiving a free make-up kit valued over \$250.00. Several local cosmetologists are present to instruct these women on the use of wigs, turbans and scarves to disguise hair loss. For more information on about this program please contact Caroline Echelle, American Cancer Society Representative at 918-423-0687.

Reach to Recovery

This volunteer visitation program is comprised of breast cancer survivors who respond to the concerns of patients and their families facing diagnosis, treatment and the effects of breast cancer. A "Reach to Recovery" volunteer provides a listening ear, recommends resources and offers emotional support. No one should have to face breast cancer alone. Please contact Jackie Gray, Coordinator at 918-426-0562 for more information or to request a visit.

HOSPITAL BASED SERVICES

Women's Imaging Center

The Women's Imaging Center is a specialized department created to suite the diagnostic needs of women, while providing a quaint, relaxed atmosphere. The center was designed with customer service being the gold standard.

Having accreditation from the American College of Radiology (ACR) and the Food and Drug Administration (FDA) the Women's Imaging Center offers screening and diagnostic Mammography procedures including breast biopsies through needle localization, ultrasound studies, ultrasound guided biopsies and bone densitometry. Computer Aided Detection (CAD) is also utilized with every mammogram increasing early detection by up to 24%. All mammography technologists are ACR certified and licensed through the American Registry of Radiologic Technologists (ARRT).

The Women's Imaging Center is a Softer Mammogram Provider offering the Mammopad, lessening the discomfort level of the procedure. As an active coalition partner with Tulsa Project Women, Inc., Women's Imaging Center provides breast services to the uninsured and underinsured population of SE Oklahoma. Also a provider for the Take Charge! Program affiliated with the Oklahoma State Department of Health, the center serves approximately eight counties.

We are proud to serve the communities located within our region and excited about the response we receive from our patients and our physicians. For more information or to make an appointment please call Brytnée Hammonds, Women's Imaging Manager at 918-421-6740.

Comprehensive Pain Management

Comprehensive Pain management at McAlester Regional Health Center has been available for cancer patients and other acute and chronic pain patient for many years. The formal organization of the pain clinic into an organized entity was undertaken in 1996 and is a continuing progressive evolution. Algology, defined as treatment of cancer pain, is a growing and well-established specialty of medicine and has drawn public support. In addition to oral pain management, advanced interventional techniques using infusion pumps and spinal narcotics are routinely available for optimum pain control.

Together our Anesthesiologists, Michael Boyer, MD and Jim Smith, MD, provide ready service and extensive experience in Hospice Care and Pain Management techniques. For consultations and appointments please call 918-421-8897.

Ambulatory Surgery Center

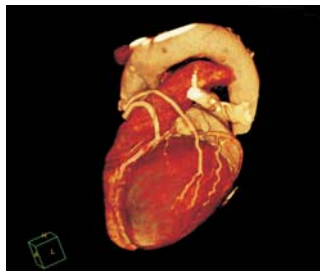
Opening in September 2001, the Ambulatory Surgery Center at McAlester Regional Health Center provides a wide range of outpatient services including general surgery, podiatry, ophthalmology, gynecology, ENT, plastic surgery, dental and gastroenterology. Performing approximately 230 outpatient procedures per month the ASC plays an important role here at McAlester Regional Health Center in the diagnosis of cancer. During 2005, the center was responsible for reporting 27 out of the 170 new cancer diagnoses to the Central Cancer Registry. For more information about the Ambulatory Surgery Center at McAlester Regional Health Center, contact Balinda Rhinehart, RN at (918) 421-6825.

(continued, page 4)

HOSPITAL BASED SERVICES *(continued from page 3)*

Diagnostic Imaging

Our new 64 channel CT scanner is the latest available technology with advanced capabilities in CT angiography, cardiology and multi-planner visualization. This equipment was obtained in July 2005 and creates a 3-D image for review. We feel very proud to be able to offer this advanced technology to our patients.



Our ambient lighting CT scanner was also purchased in July 2005 and creates a relaxed atmosphere for the patient. A choice of backgrounds allows the patient to remain calm and more relaxed while the test is carried out. This helps alleviate any movement that might distort the image.



Laboratory/Pathology Services

McAlester Regional Health Center's laboratory, certified by the College of American Pathologists, offers round-the-clock clinical laboratory services. A full spectrum of testing is offered as well as consultations and problem-solving assistance. Examination of biopsies and cytology specimens provide the initial diagnosis of malignancy as well as evaluation of possible recurrence. Routine biopsy interpretation, intra-operative immediate frozen section interpretation and special stain interpretation including immunohistochemistry and bone marrow biopsy are all used to diagnose malignancies. The laboratory is under the direction of board-certified pathologist Rick Judge, MD.

HOSPICE CARE

According to the National Home Health and Hospice Association less than 20% of people in Southeastern Oklahoma who qualify for Hospice services receive Hospice care. Hospice care acknowledges that most advanced stage illnesses cannot be cured, so the primary goal becomes giving the patient and their family the highest possible level of physical comfort and peace of mind. Hospice services are available to patients and their families at no charge.

Hospice of McAlester

Hospice of McAlester is a non-profit, Medicare certified, state licensed agency created by the community more than 14 years ago. As a physician directed, nurse coordinated team of health care professionals, we provide efficient, loving care to individuals who are believed to have a limited life expectancy. The team of Hospice of McAlester consists of a physician specializing in pain control and hospice care, a patient care coordinator, hospice nurses, social worker/counselor, volunteer clergy, dietary, occupational, physical and speech therapists. Other services include medication, equipment and medical supplies, home health aid visits, family and individual counseling and spiritual support.

During 2005 Hospice of McAlester served 140 patients with more than 80% having some type of malignancy. Please contact Rhonda Kurvink, Director at 918-423-3911 for more information.

Good Journey Hospice

Good Journey Hospice is committed to providing compassionate services to patients in our coverage area. Compassionate service is the heart of Good Journey and bringing our patients and families comfort is paramount to us. We have worked diligently in the McAlester area to establish a high level of care. Families we have served will testify to our commitment to "doing" all we can to be "with" our patients and families. Good Journey Hospice embraces holistic care in our hospice services. We address clinical, psychological, social and spiritual needs as we serve our clients.

With locations in McAlester, Allen and Atoka, Good Journey Hospice served 30 patients since its inception in early 2005. For more information please contact Kathy Moore, Administrator/CEO 918-302-0103.

Sequoyah Hospice

At Sequoyah Hospice, we believe there should be no barriers to high-quality end-of-life care. Even though dying and death are a normal part of life, we understand the symptoms of a life-limiting illness can have an impact on how one lives life. It is our goal to help patients and families make the most of their remaining days, weeks, months and even years.

We specialize in pain management and symptom control. We also offer the emotional, social and spiritual support to patients and their loved ones helping them to deal with the impact of a terminal illness.

Sequoyah Hospice (formerly Peachtree Hospice) has served the McAlester area for almost four years. Our staff includes a Medical Director, Associate Medical Directors, RNs, LPNs, Certified Home Health Aides, a Master's level Medical Social Worker, a Master's level Chaplin, Volunteers and administrative personnel. Please contact Shirley Fleming, M.A. at 918-302-0533 or 1-866-859-0400.

Heartland Hospice

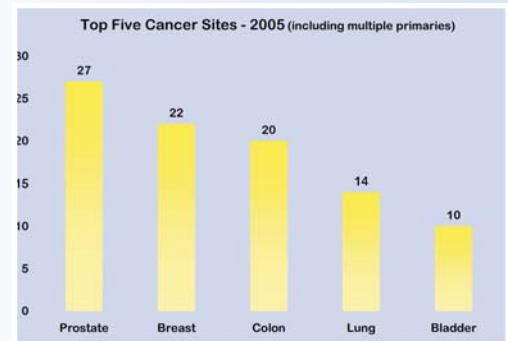
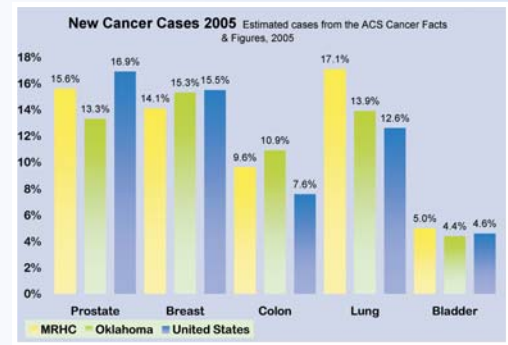
Located in McAlester, Heartland Hospice has been providing hospice services to McAlester and the surrounding communities since 2003. Heartland takes pride in providing continuous care for patients in times of crisis. Heartland's philosophy of palliative care is inclusive, not exclusive, allowing patients to receive chemotherapy, radiation therapy, and other modalities if the treatment is needed for palliation. Contact Janice Hancock, Administrator, or Kelly Squyres, Director of Professional Services, at 918-302-0700 for more information.

CANCER CONFERENCE

The Oklahoma State Accrediting Council has accredited McAlester Regional Health Center 1 Credit Hour in Category II for Continuing Medical Education (CME) awarded to each physician attending Cancer Conference. In 2005 eleven formal conferences were held with an average attendance of 40 physicians and ancillary staff.

CASES PRESENTED AT THE MONTHLY CANCER CONFERENCES IN 2005

Adrenal	1	Ovary	1
Bladder	2	Pancreas	2
Breast	7	Prostate	2
Colorectal	9	Salivary Gland	1
Duodenum	1	Stomach	2
Lung	3	Subglottis	1
Lip	1	Thyroid	3
Lymphoma (Hodgkins)	2	Unknown Primary	2
Neuroendocrine	1		
TOTAL		41	



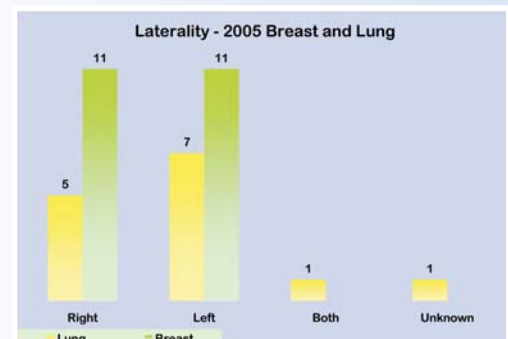
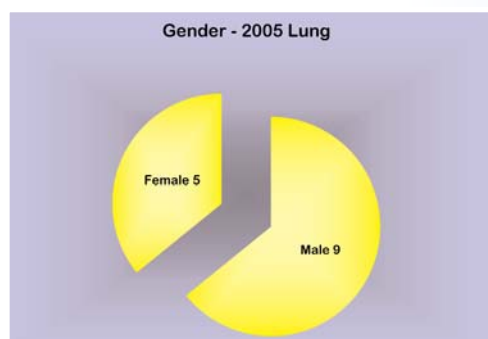
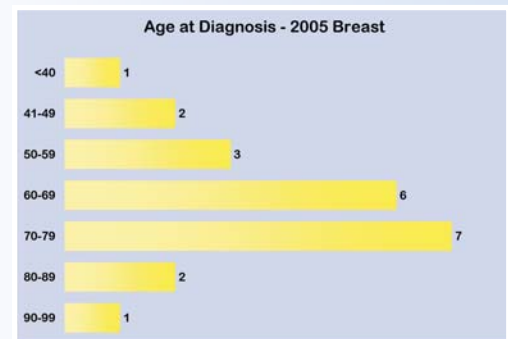
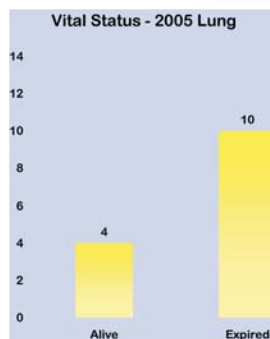
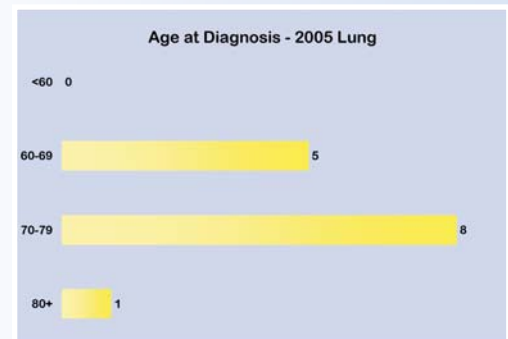
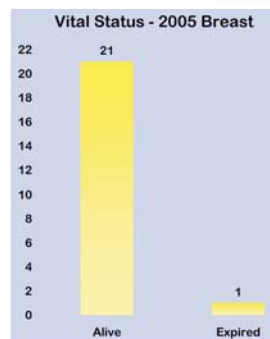
SITE SPECIFIC DATA ANALYSIS — BREAST AND LUNG

Breast and lung cancer remain the top two cancer related deaths for both men and women. Lung cancer ranks first for cancer deaths in both men and women with breast cancer ranking second among cancer deaths in women (after lung cancer).

- * Breast cancer has become the most frequently diagnosed cancer in women mainly due to increased use of mammography. Deaths from breast cancer have declined due to earlier detection through screening, increased awareness, and improved treatment.
- * Lung cancer incidence is significantly declining in men and has remained stable in women since 1998.

Since 1987, more women have died each year of lung cancer than from breast cancer. These trends in lung cancer mortality reflect decreased smoking rates over the past 30 years.

Information obtained from the ACS Cancer Facts and Figures and MRHC database.



DISTRIBUTION OF CASES 2005

HEAD AND NECK

Site	Total Cases	M/F
Lip	1	1/0
Salivary Gland	1	0/1
Larynx	2	1/1
Thyroid	2	1/1
Total	6	3/3

DIGESTIVE SYSTEM

Site	Total Cases	M/F
Esophagus	1	0/1
Stomach	4	2/2
Small Intestine	3	1/2
Colon	20	7/13
Rectum	1	1/0
Liver	1	1/0
Pancreas	3	1/2
Total	33	13/20

RESPIRATORY & INTRATHORACIC ORGANS

Site	Total Cases	M/F
Lung	14	9/5
Total	14	9/5

BONE & SOFT TISSUE

Site	Total Cases	M/F
Bone	1	1/0
Peritoneum	1	0/1
Connective tissue	1	0/1
Total	3	1/2

SKIN

Site	Total Cases	M/F
Skin	2	0/2
Total	2	0/2

MELANOMA

Site	Total Cases	M/F
Melanoma	1	0/1
Total	1	0/1

FEMALE ORGANS

Site	Total Cases	M/F
Breast	22	0/22
Vulva	3	0/3
Corpus Uteri	1	0/1
Uterus	2	0/2
Ovary	1	0/1
Total	29	0/29

MALE ORGANS

Site	Total Cases	M/F
Prostate	27	27/0
Total	27	27/0

URINARY

Site	Total Cases	M/F
Bladder	10	7/3
Total	10	7/3

CENTRAL NERVOUS SYSTEM

Site	Total Cases	M/F
Brain	2	1/1
Total	2	1/1

LYMPHOID NEOPLASMS

Site	Total Cases	M/F
Lymphoma	5	4/1
Total	5	4/1

HEMATOPOIETIC & MISCELLANEOUS

Site	Total Cases	M/F
Blood and Bone Marrow	6	5/1
Ill-Defined	1	1/0
Unknown Primary site	3	2/1
Total	10	8/2

SUMMARY

Analytic Cases	142
Male Cases	73
Female Cases	69

McAlester Regional Health Center Patient Resource

Cancer Center (for information and brochures)	918 426-0625
Cancer Registry	918 421-8658
Look Good . . . Feel Better	918 423-0687
Reach to Recovery	918 426-0562
Diagnostic Imaging	918 421-8279
Women's Imaging Center	918 421-6740
Pain Management	918 421-8897
Ambulatory Surgery Center	918 421-6825
Hospice Services	
Hospice of McAlester	918 423-3911
Good Journey Hospice	918 302-0103
Sequoyah Hospice	1 866 859-0400
Heartland Hospice	918 302-0700
McAlester Regional Health Center (main number)	918 426-1800